



TURCOT

Update on the Turcot Project Public Presentation - Westmount

January 14, 2015

Project Description



Objectives

- Ensure quality in infrastructures built
- Limit the inconvenience caused to local communities and users
- Maintain traffic on the primary road network
- Promote the socioeconomic development of the greater Montréal area
- Respect environmental and sustainable development principles
- Ensure urban integration and development of the territory
- Respect the budget and the schedule

Project Description

- Component 1: Work in conventional mode by the MTQ
- Component 2: Work in design-build (D-B) mode
- Component 3: Maintenance work on existing structures
- Railway works under CN's responsibility

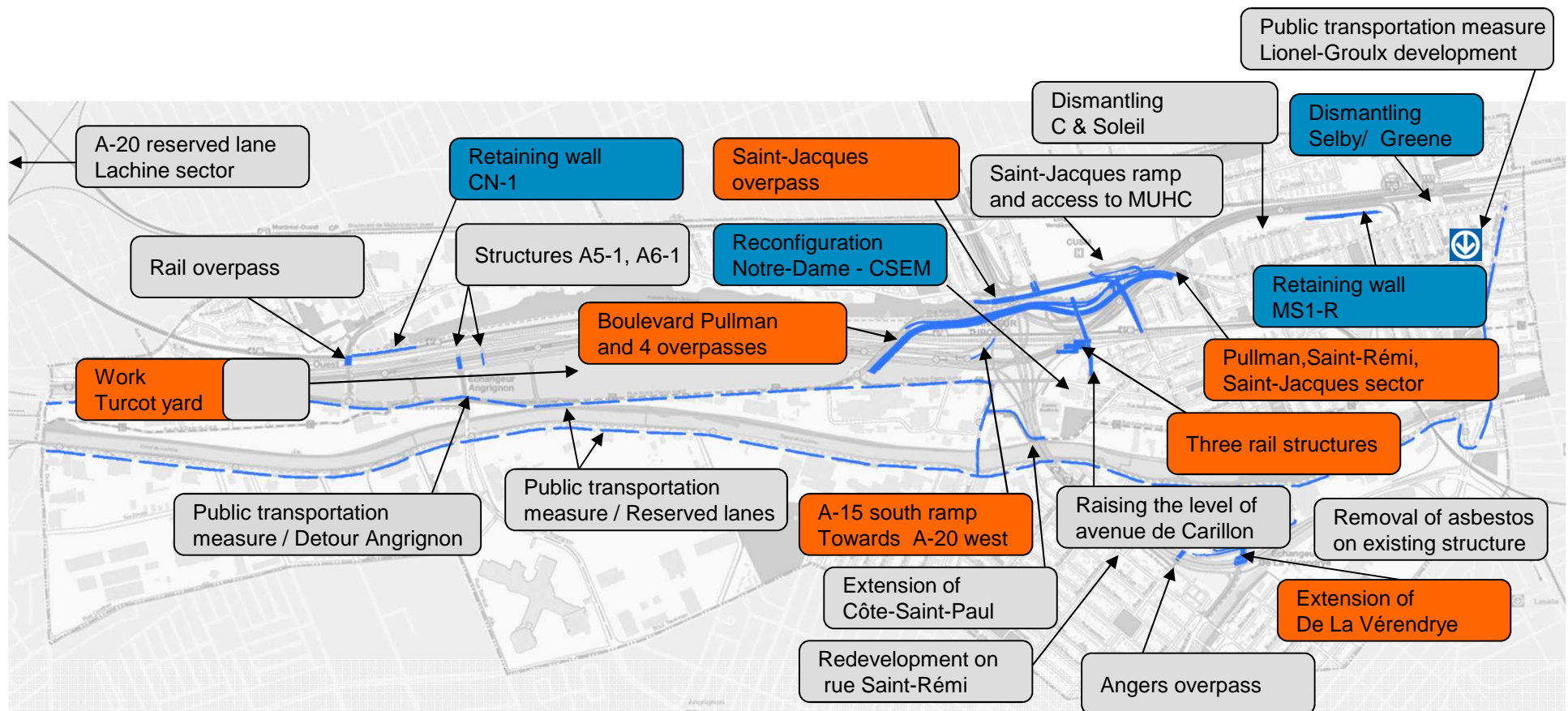


Schedule

- July 2011-2017: Work conducted by the MTQ
- April 2013: Launch of the Request for Proposals
- December 2014: Selection of the D-B Supplier
- End of February 2015 : signature of the D-B contract
- 2015-2020: Civil work related to the D-B Project

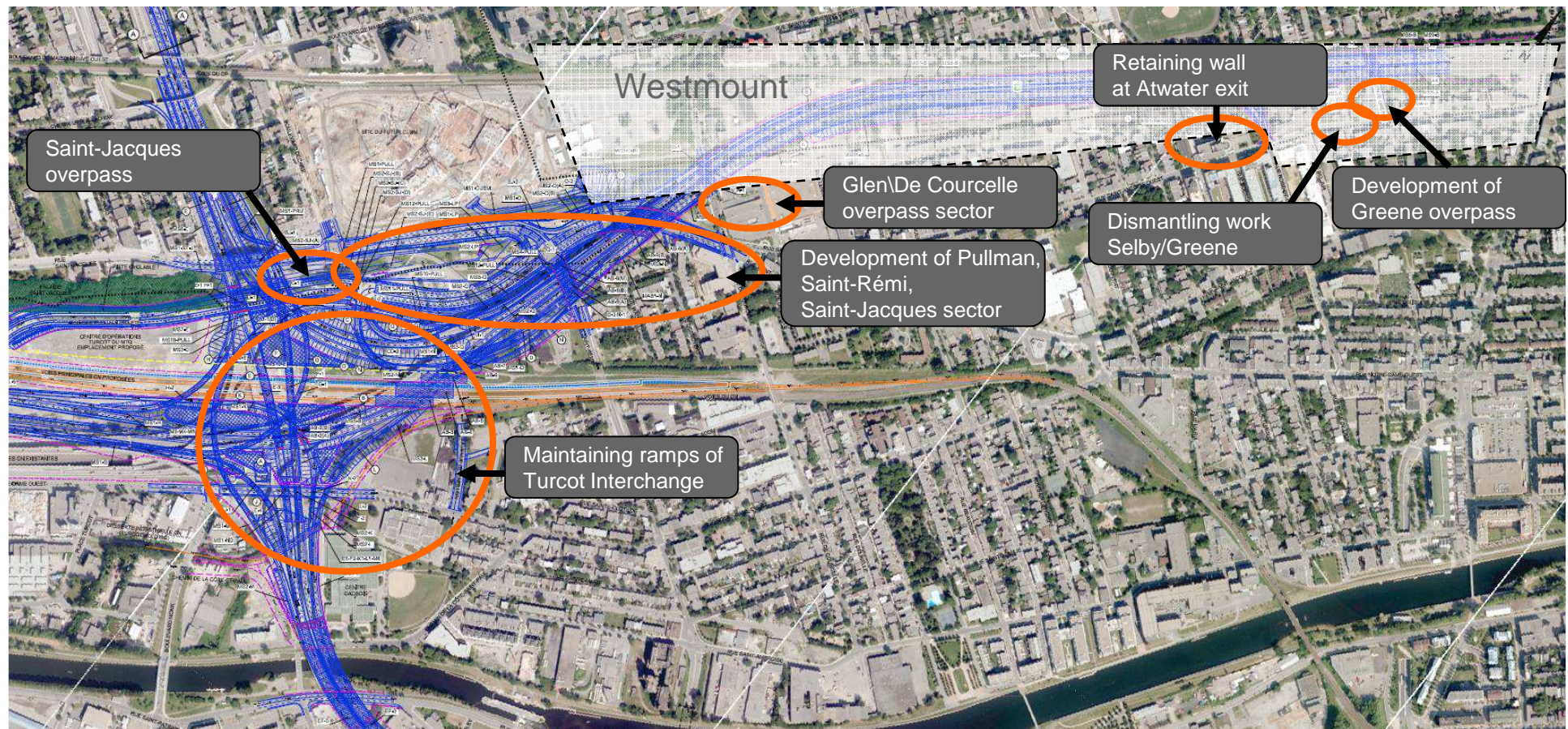


Component 1 - Work in conventional mode



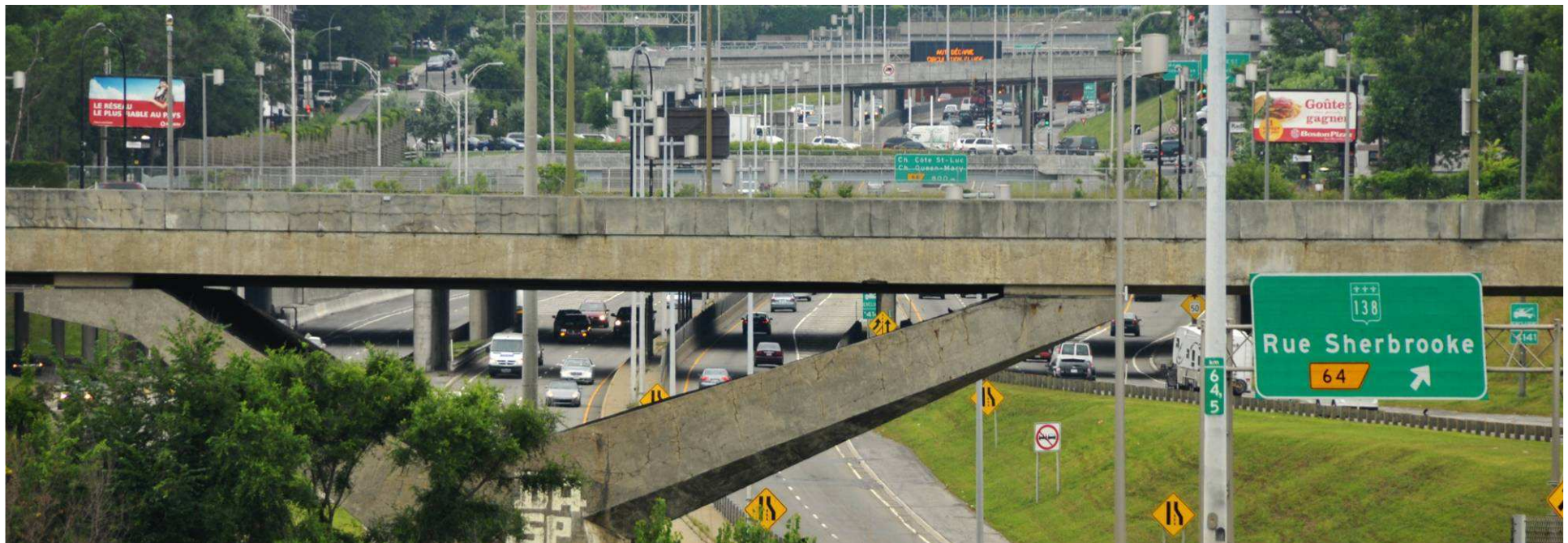
Completed work
 Ongoing work
 Ongoing engineering work or work to be started

Activities Related to Westmount



Saint-Jacques Overpass

- The condition of the collector requires specific interventions
- Long-term closure of rue Saint-Jacques
- Schedule to be announced

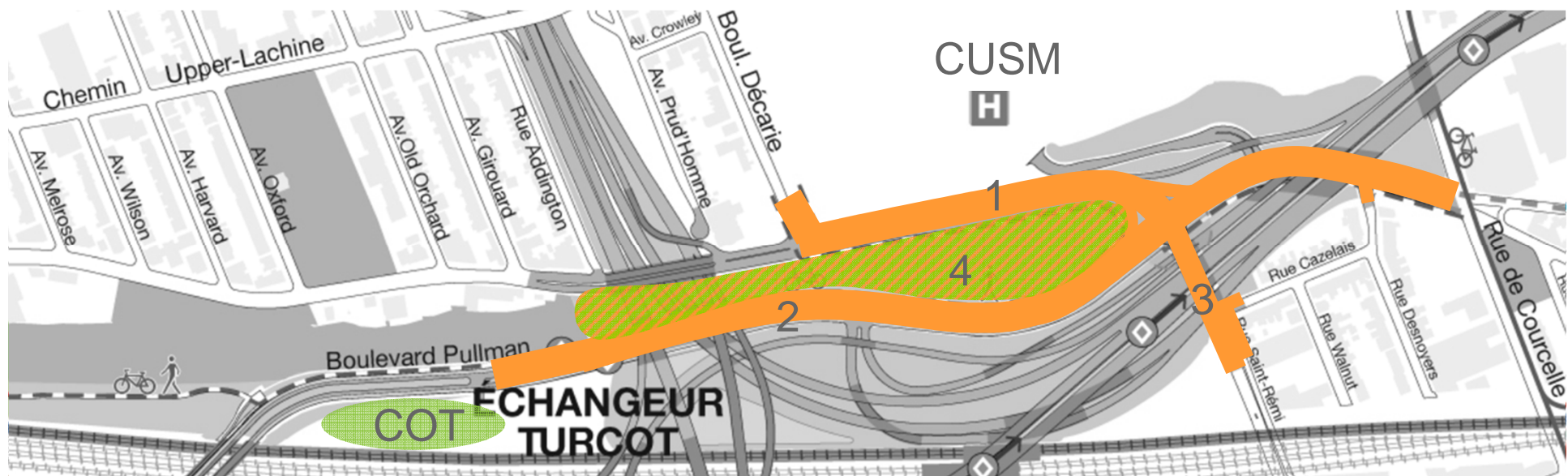


Mitigation Measures for St-Jacques Overpass

- Opening of the Girouard on-ramp toward the A-15 South (October 2013)
- Addition of a right-turn lane on chemin de la Côte-St-Luc (May 2014)
- Implementation of a reserved lane on rue Sherbrooke Ouest (June 2014)
- Opening of the De Maisonneuve exit on the A-15 South (August 2014)
- Addition of a temporary reserved lane on chemin Upper-Lachine (to come)
- Coordination of worksites between different partners

Development of the Pullman Sector

1. Saint-Jacques between Décarie and access road to MUHC
2. Pullman between the Turcot operations center (COT) and rue De Courcelle
3. Saint-Rémi between Saint-Jacques and rue Cazelaïs
4. Development of the escarpment (St-Jacques cliff)



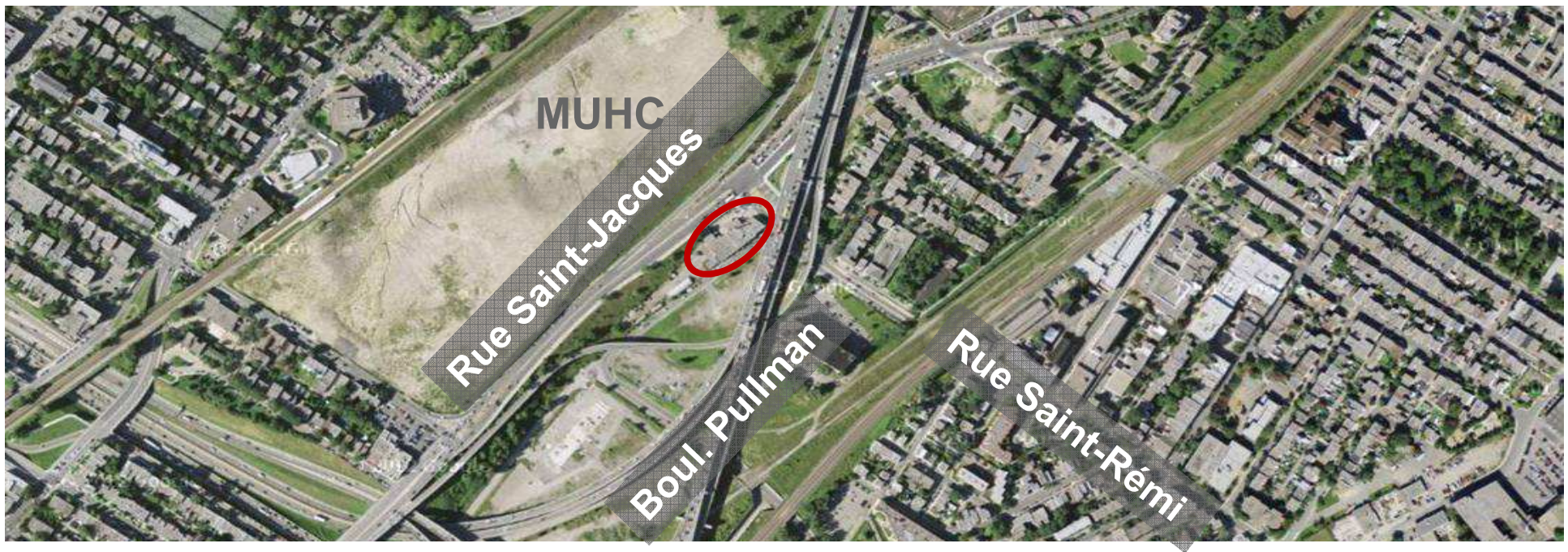
Development of the Pullman Sector

Landscaping on rue Saint-Jacques



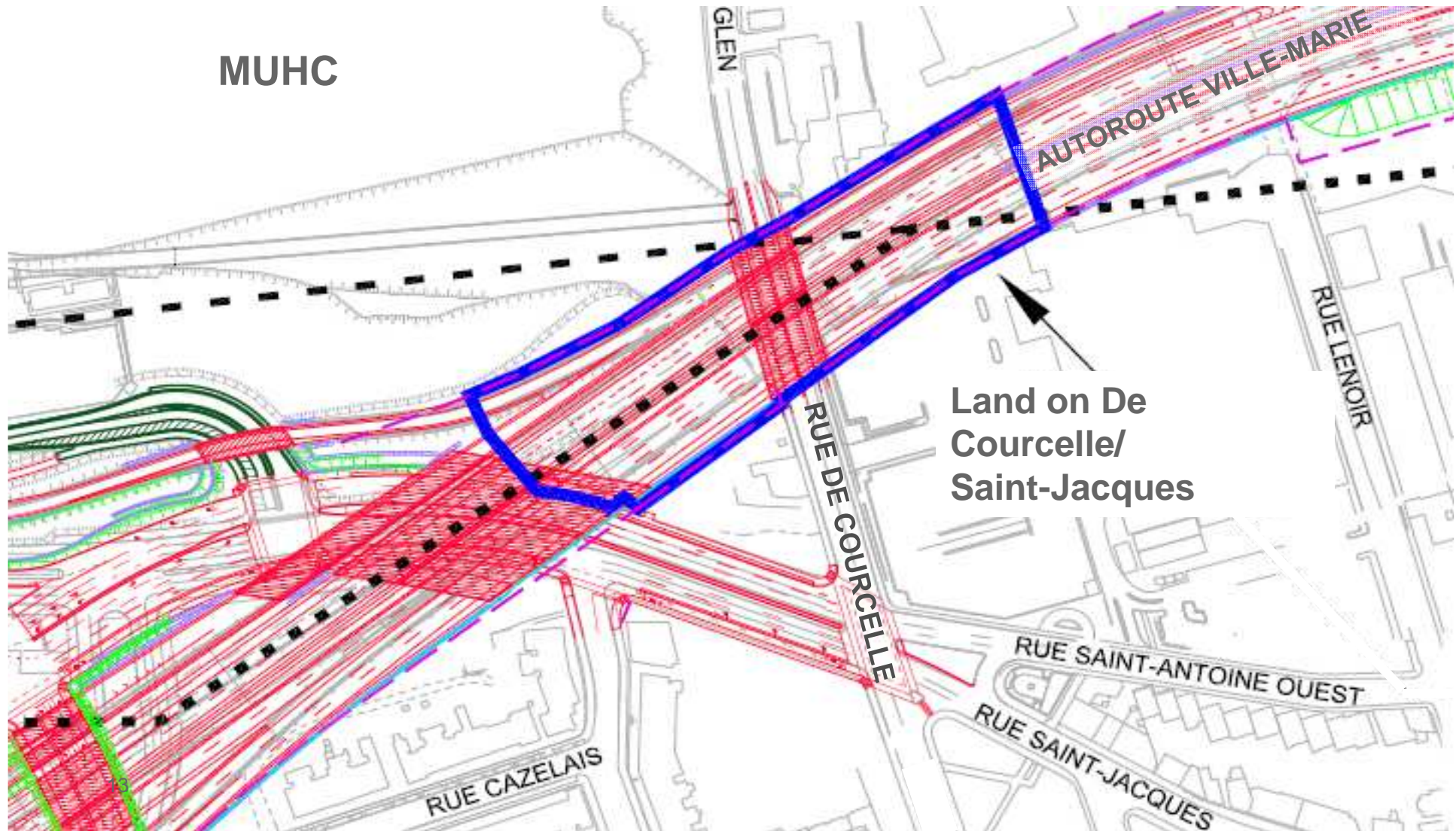
Redevelopment of rues Pullman, Saint-Rémi and Saint-Jacques

- Dismantling of a building on 856, rue Saint-Rémi



Land on De Courcelle / Saint-Jacques

MUHC



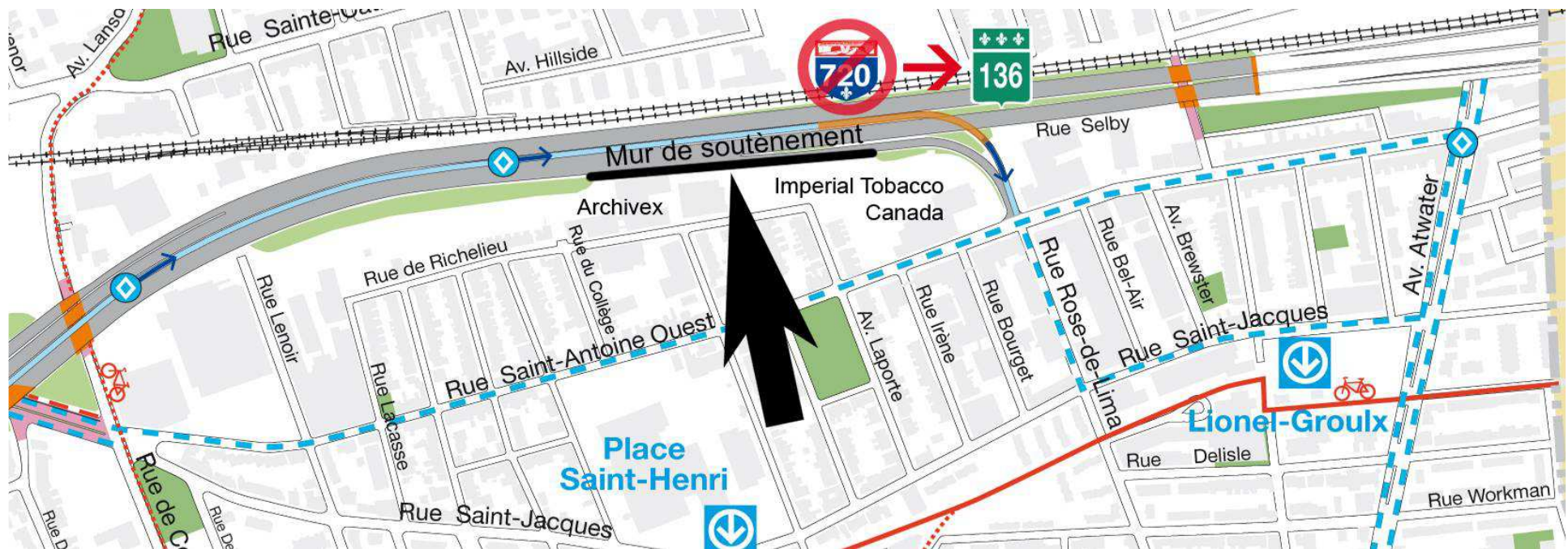
Land on Glen \ De Courcelle

- Architectural concept of the sector in line with the development of the cliff



Retaining Wall, A-720 exit at Atwater

- Work duration: 6 months
- Occasional partial closures of the Atwater exit



Retaining Wall, A-720 exit at Atwater

- Result from the online public consultation: Green wall



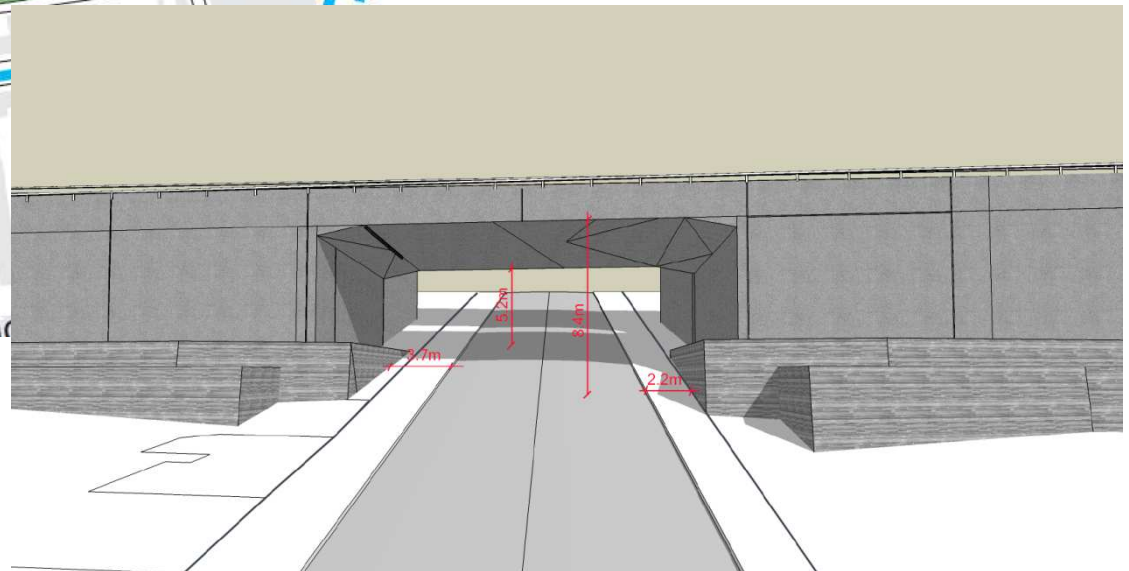
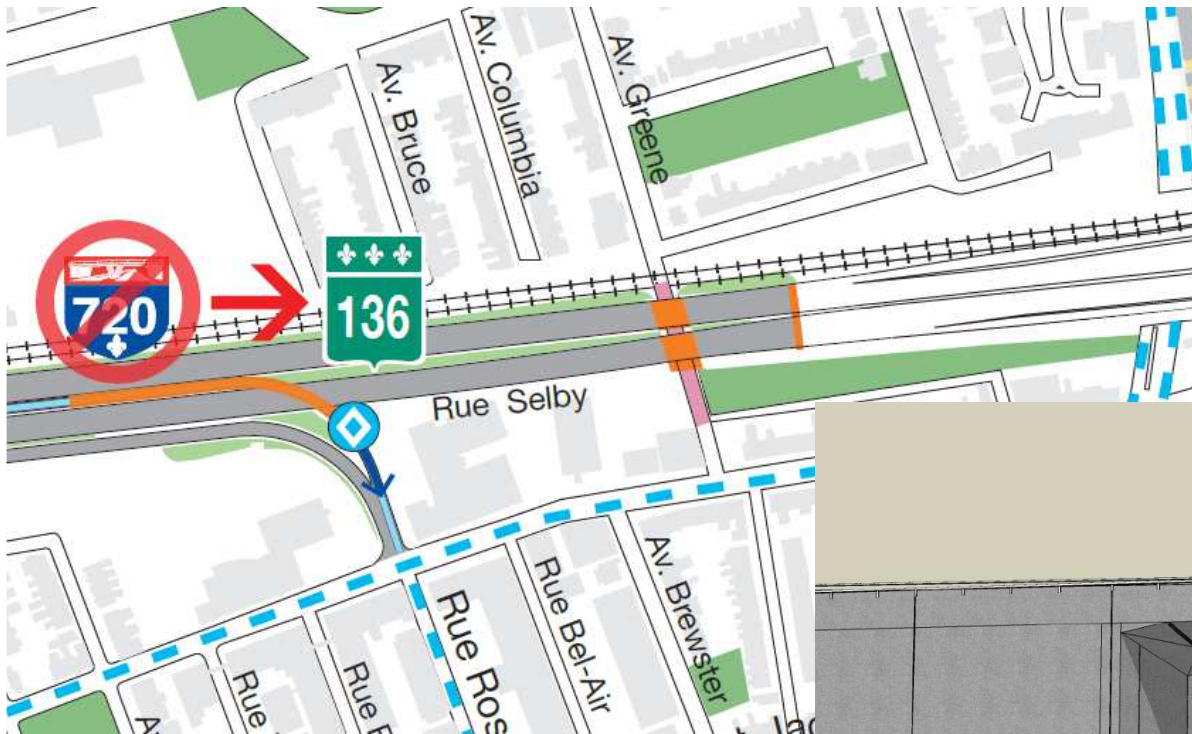
Dismantling of Buildings

- Residential buildings at the corner of rue Selby and Greene avenue



Greene Overpass

- Impact of the two-lane structure on the network



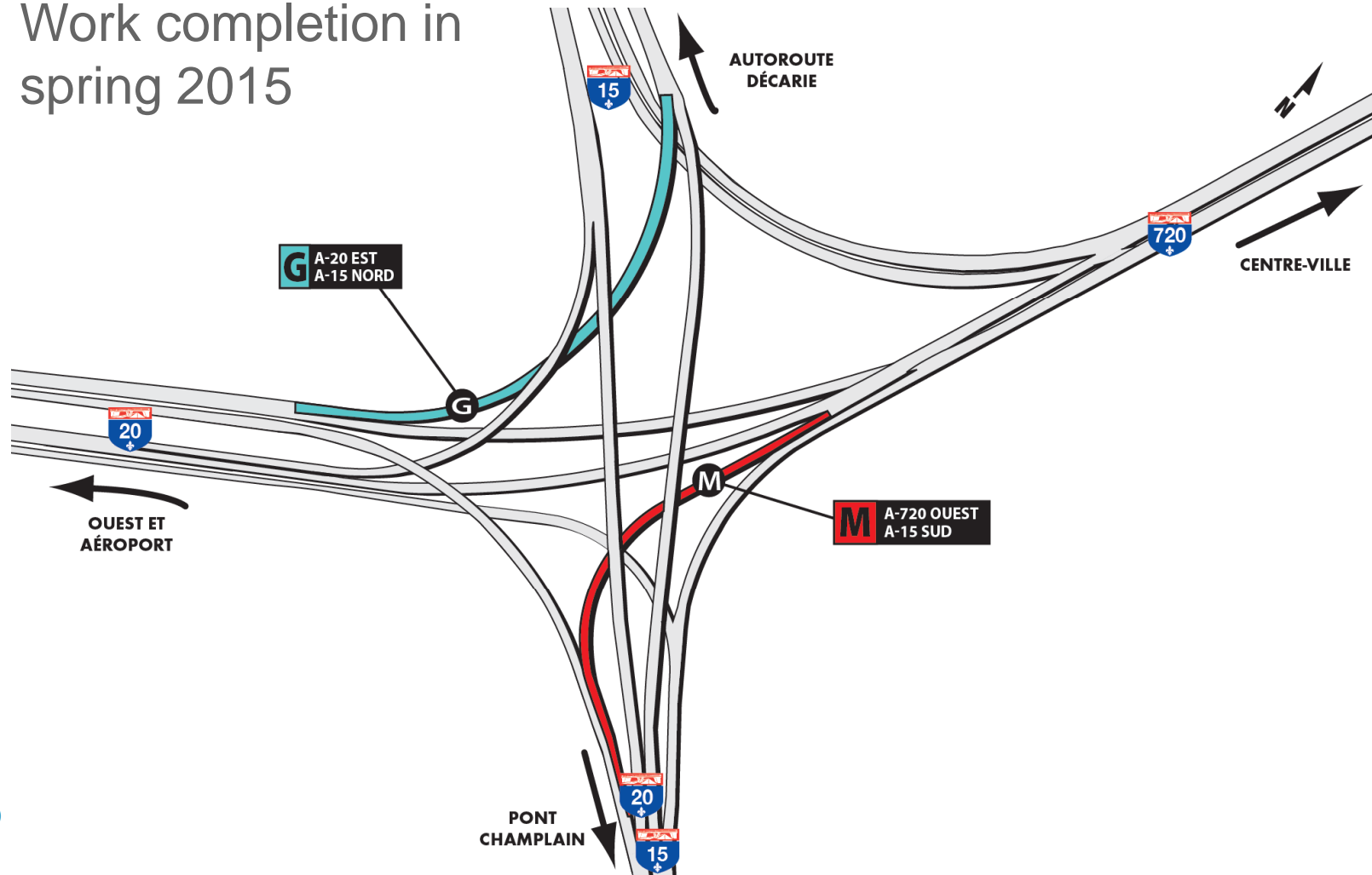
Greene Overpass

- Terraced landscape



Maintenance Work on Existing Structures

- Work completion in spring 2015



For More Information

- Neighbourhood committee in NDG/Westmount
- Neighbourhood committee in the South-West
- Website: www.turcot.gouv.qc.ca
- Monthly electronic bulletin
- Phone line dedicated to the project: 514 873-1372
- Twitter @MTQ_Turcot

