




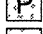
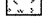
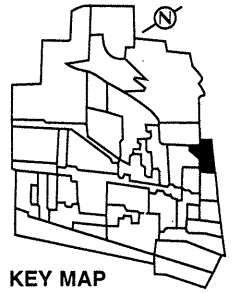


Character Area 10 Saint Sulpice and Ramezay

On land that was once part of the Sulpicians' farm, this isolated enclave is the site of some very fine stone residences built around 1930. The gently curved and free flowing layout of streets, such as Ramezay and Daulac Roads, were inspired by the Garden Cities movement. This area also makes up a landscaped whole with the adjacent Rosemount and Cedar areas.

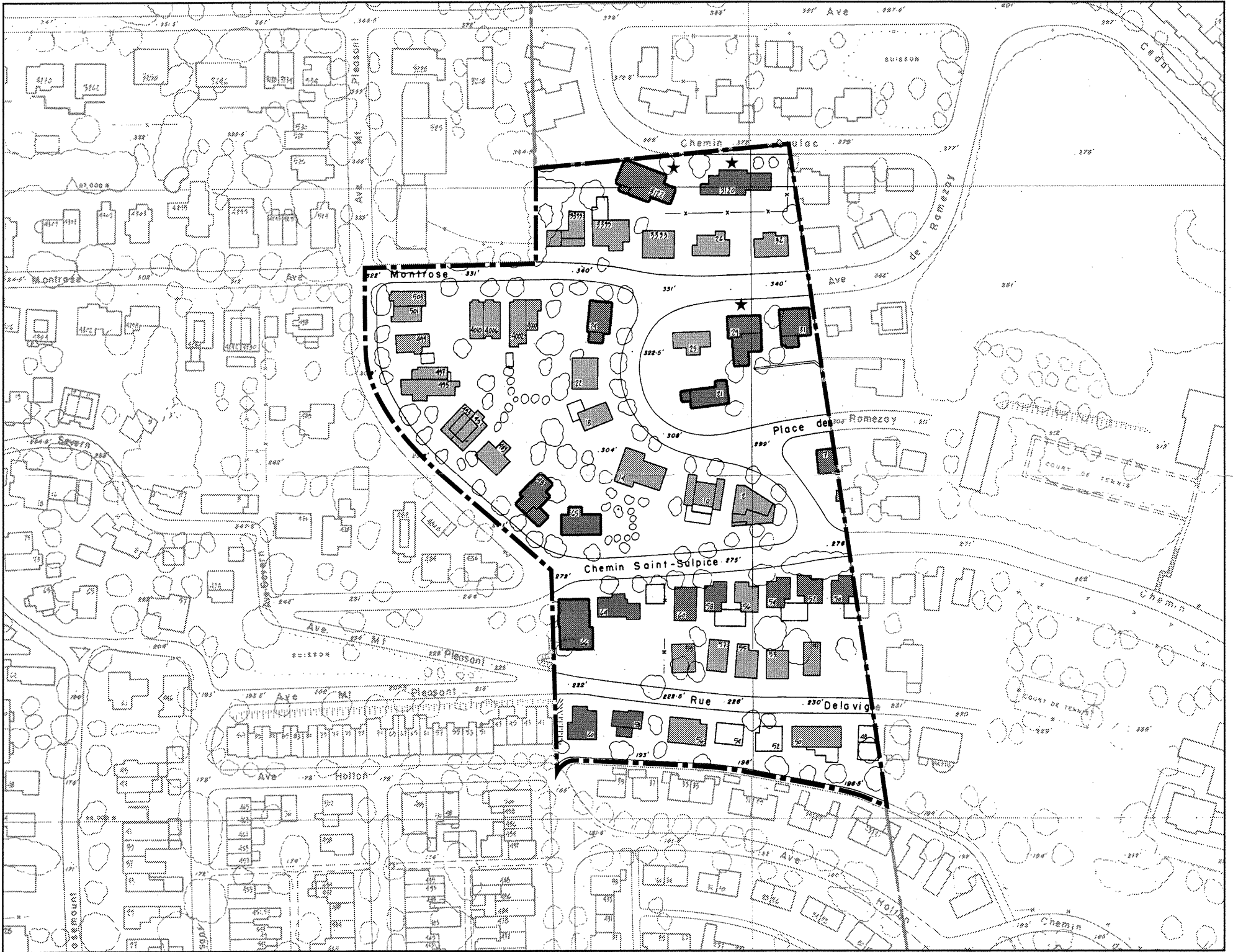
LEGEND

-  **Category I**
Exceptional (★) to Important
-  **Category II**
Significant
-  **Category III**
Neutral
-  **Architectural Ensembles**
-  **Buildings profiled in the 1988
Westmount Heritage Study**
-  **Public Green Space**
-  **Semi-private or private
Green Space of importance**



KEY MAP

Area Heritage Value: HIGH
Degree of Homogeneity: MEDIUM



List of Building Addresses with Categories

Cat	Address	Cat	Address	Cat	Address	Cat	Address	Cat	Address	Cat	Address
I*	Daulac Road, south side	III	De Lavigne Road, south side	II	Mount Pleasant Ave., cont'd	II	Montrose Ave., south side	I*	Ramezay Road, cont'd	I	St. Sulpice Road, north side
I*	3120	II	48	II	493	II	4000	I	29	I	65
	3122	II	50	II	495	II	4002	I	31	I	St. Sulpice Road, south side
	De Lavigne Road, north side	III	52	II	497	II	4006	II	Ramezay Road, west side	I	50
II	51	III	54	II	499	II	4010	II	2	I	52
II	53	II	56	II	501	I	Place de Ramezay, south side	I	10	I	54
II	55	I	58	II	503	II	1	II	14	II	56
II	57	I	60	II	Montrose Ave., north side	I	7	II	18	I	58
II	59	I	Mount Pleasant Ave., east	II	3993	I	Ramezay Road, east side	II	22	I	60
		II	487	II	3995	I	21	I	24	I	64
		II	489	II	3999	II	25	II	26	I	66
		II	491					II	32		

Defining characteristics of Character Area 10 Saint Sulpice and Ramezay

The following are some of the **key defining characteristics** applying to the whole area.

Use and typology: All buildings are single-family houses, the vast majority (80%) of which are detached.

Siting: The houses are almost always sited parallel to the street. On each street, the houses are generally consistent in their setback from the street.

Heights and frontages: The buildings are generally 2 or 2-1/2 storeys high (average height is 9.3 m and 10.9 m respectively). The semi-detached buildings are all 7.0 - 8.0 m wide and the detached buildings are almost all 10.0 - 20.0 m wide.

Roofs: Just over half of the houses have sloped roofs of pavilion, single or multi-gabled shapes. The remainder have flat roofs mainly with parapets.

Facade materials: The facade material is almost always either brick (54%) or greystone (42%).

Entrance conditions: Entrances almost always face the street. Their levels are generally 0.2 - 1.6 m above sidewalk level.

Facade treatments: The facades are generally simple, articulated by slight projections of the exterior wall, bow windows, recessed entrances or porticos, and/or chimney stacks at end walls.

Windows: Windows are almost always vertical, either in vertical openings or grouped in square or horizontal openings. Originally, approximately two-thirds of the houses had double-hung windows (about 15% have since been replaced by other styles, mostly casement). Original casement windows are also present in approximately 20% of the buildings. Windows with single panes of glass or sliding windows are most common in the newer houses.

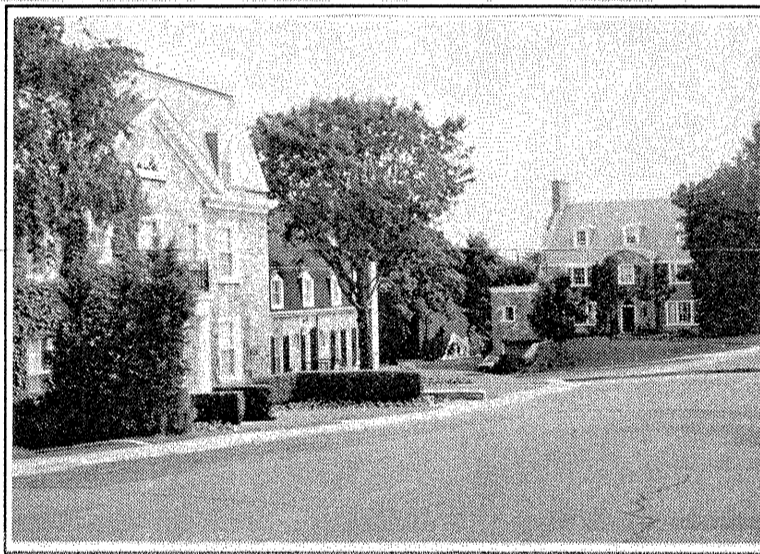
Parking: Virtually all houses have garages facing the street, either forming part of the main facade or attached to the house.

The following are **defining characteristics** of specific **streetscapes** in addition to those of the whole character area unless otherwise noted.

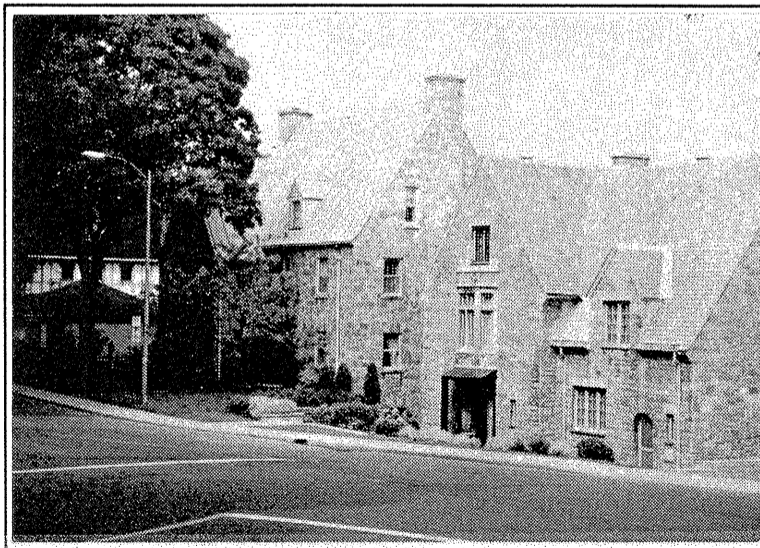
De Lavigne (north side): Entrance levels are almost all very high above the street (approximately one storey above sidewalk level). Almost all houses are in brick with false mansard roofs. The spacing of homes is similar to that of St. Sulpice.

Ramezay Road: Almost all houses have sloping roofs. Generally, the main facade windows are arranged symmetrically, on either side of the entrance doors.

Saint Sulpice Road: Almost all are 2-1/2 storey stone houses with pronounced multi-gabled roofs, and facades with projecting walls. Their entrance level is quite close to street (average: 0.25 m) and almost all windows are double-hung. The houses are all spaced quite close to each other (approximately 4.0 - 5.0 m apart).



Ramezay Road: houses with sloped roofs and symmetrical facades.



Saint Sulpice Road: rusticated stone houses with multigabled roofs.