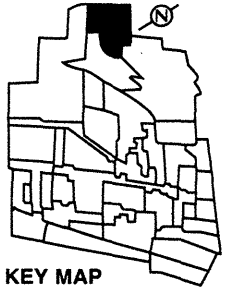


Character Area 1 Vicinity of St. Joseph's Oratory

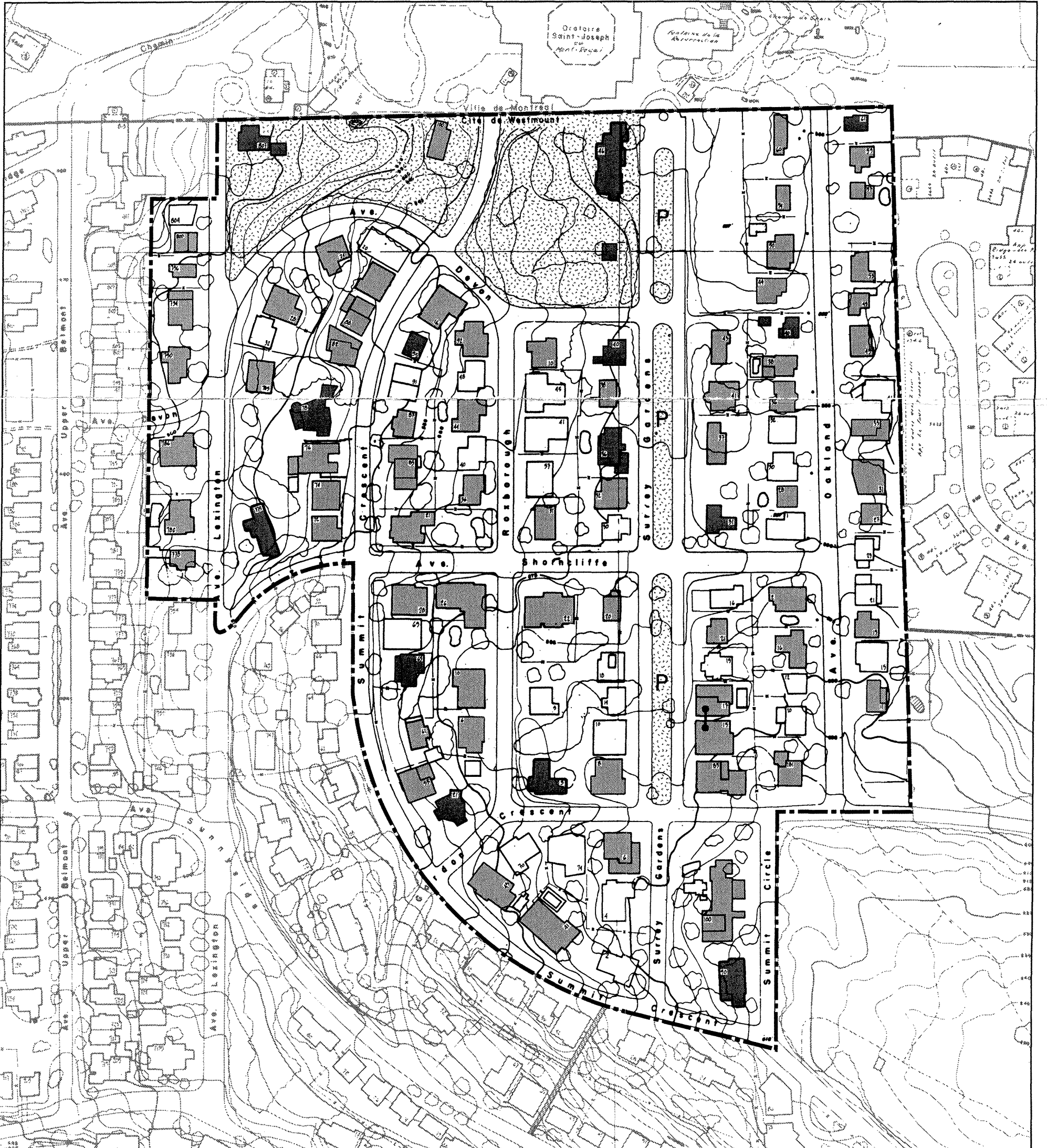
Most of this plateau near the summit of Westmount mountain, originally the properties of Murray and Raynes, served as the "Westmount Golf Links" in the first part of the 20th Century. Although the roads were laid out and the land subdivided "for residences of best classes" before World War II, it was mostly developed after the war as is evident by its modern architecture. The area includes some houses built before the war as well as several more recent houses built in traditional revival styles.

LEGEND

- Category I
Exceptional(★) to Important
- ▒ Category II
Significant
- Category III
Neutral
- Architectural Ensembles
- ▭ Buildings profiled in the 1988
Westmount Heritage Study
- P Public Green Space
- ⊞ Semi-private or private
Green Space of importance



Area Heritage Value: LOW
Degree of Homogeneity: MEDIUM



Defining characteristics of Character Area 1 Vicinity of St. Joseph's Oratory

The following are some of the key defining characteristics applying to the whole area.

Use and typology: All buildings are single-family detached houses.

Siting and orientation: Generally, the building setbacks range between 4.5 and 8.0 m from the streetline. With some odd exceptions, the main facades are parallel to the street.

Heights and frontages: The number of storeys varies from one to two-and-a-half with two storeys as the most common height. The building frontages generally range between 15.0 - 20.0 m (average: 17.4 m).

Roofs: Roofs are predominantly (80%) sloped. However, the slopes are generally very low in pitch.

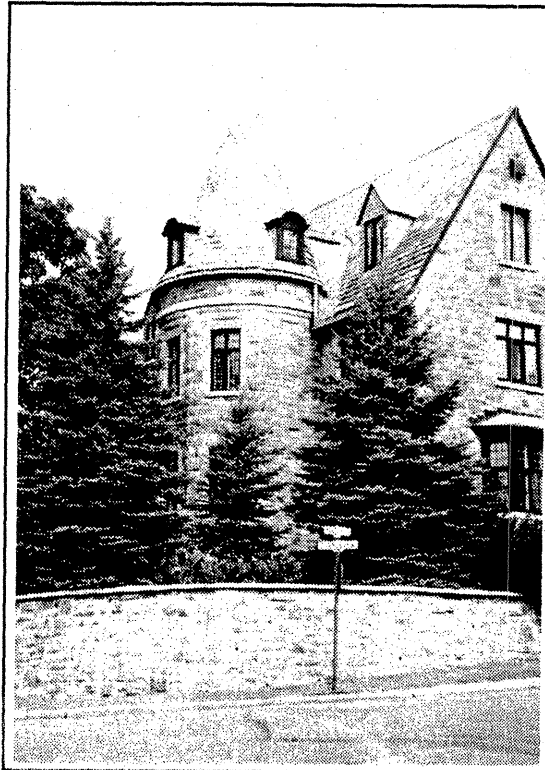
Facade materials: The facades are almost always either in brick (57%) or in stone (40%). There is a wide variety in the type and colour of stone used as well as its shape, size and finishing.

Entrance conditions: Entrances almost always face the street. Their height above street level varies, even within a streetscape, averaging about 1.0 m. The entrance steps are generally wide and do not have railings.

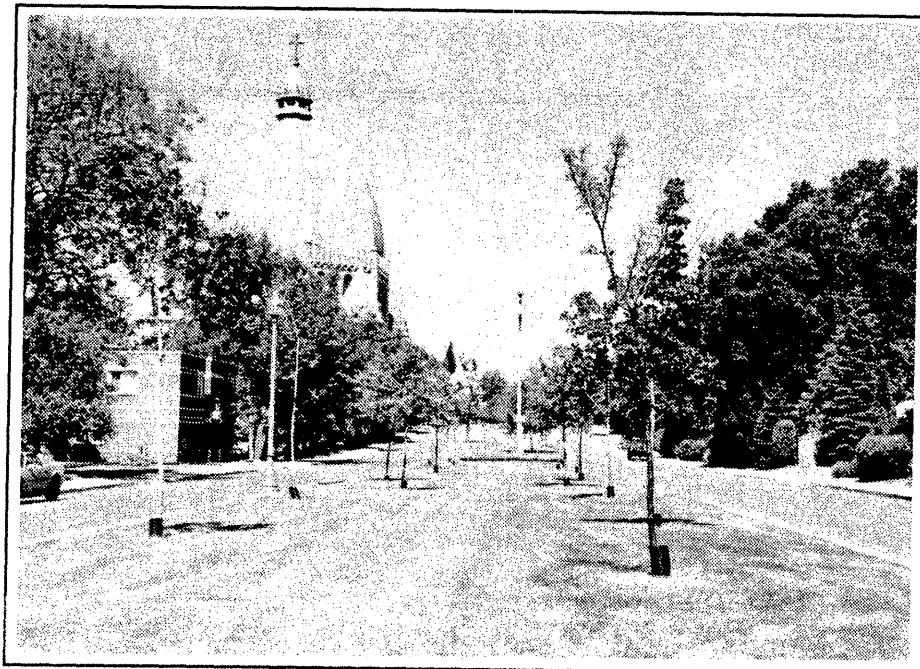
Facade treatments: Most of the homes in this area contrast with the more fanciful buildings found in the rest of Westmount. Mostly products of the modernist movement, they have simple forms, are often asymmetrical and horizontal in composition and are usually without ornamentation.

Windows: There is a variety of window shapes and sizes although the openings are more likely to be horizontally oriented, particularly in the newer buildings.

Parking: Parking is always provided by garages that are almost always integrated in the main volume of the building.



3 Roxborough: one of the pre-1940 houses of the area.



Surrey Gardens: designed c. 1910 by Brett and Hall (Boston) landscape architects.

List of Building Addresses with Categories

Cat	Address	Cat	Address	Cat	Address	Cat	Address	Cat	Address	Cat	Address
	Devon Ave. south side		Lexington Ave., cont'd		Oakland Ave., west side		Roxborough Ave., west side		Summit Crescent, north side		Surrey Gardens, cont'd
II	10	II	790	III	10	II	6	II	41	II	21
II	16	II	794	II	12	II	10	II	45	II	31
III	20	II	796	II	16	II	36	II	55	II	37
II	24	II	800	II	28	II	40	II	61	II	41
II	28	III	804	III	30	II	44	I	65	II	43
III	32		Oakland Ave., east side	III	32	III	48	III	69		Surrey Gardens, west side
	Gordon Crescent, north side	II	11	II	36	II	52	II	83	III	2
I	21	III	15	II	38		Shorncliffe Ave., north side	II	87	III	4
II	85	II	19	I	40	III	1	III	91	II	6
II	111	III	21	I	44	II	21	I	95	II	8
	Gordon Crescent, south side	III	23	II	50		Shorncliffe Ave., south side		Summit Crescent, south side	III	10
III	70	II	27	II	54	II	2	II	72	III	14
III	74	III	29	II	60	III	16	II	74	III	18
	Lexington Ave., east side	II	31		Roxborough Ave., east side	II	22	II	76	II	20
I	775	II	35	II	3	II	26	I	78	III	30
II	789	III	41	III	9	II	28	II	82	II	32
I	807	II	45	II	31	II	31	II	88	I	36
	Lexington Ave., west side	II	49	III	37	I	90	II	94	II	38
II	778	II	53	III	41	II	100	II	Surrey Gardens, east side	I	40
II	780	II	57	III	45			II	15	I	46
II	786	I	61					III	17		
									19		