

Construction Notice



Beginning : July 20

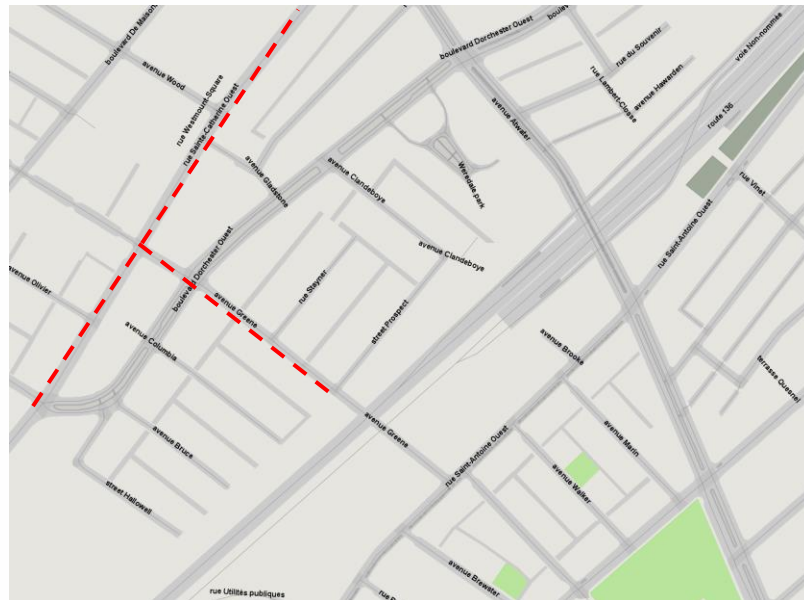
Estimated duration : 6 weeks

Major obstacles ahead

Avenue Greene, between Rue Prospect and Rue Sainte-Catherine

Changes to detours and obstructions are planned in the area to carry out the rehabilitation and reconstruction of a main water pipe with the integration of work by the City of Westmount.

Work area



Traffic and parking



- Flaggers will be present to facilitate smooth and safe movement as needed.
- Temporarily used parking spaces for equipment and to ensure a safety perimeter near the construction site.

Avenue Greene

- Closed between Rue Prospect and Rue Sainte-Catherine
- Please respect the signs in place indicating detours, local traffic, parking, etc.

Rue Prospect

- Local traffic only

Rue Sainte-Catherine

- Closed between Boulevard Dorchester and Avenue Atwater
- Detours to be expected
- Local traffic only

Construction site information



- Worker schedules: Monday to Friday, 7 a.m. to 7 p.m., and Saturday as needed.
- The presence of rock requires the use of jackhammers, which cause more noise, dust, and vibrations than expected. Noise and vibrations are monitored to ensure they do not exceed permitted regulatory limits.
- Some work may be postponed or extended due to unforeseen circumstances or adverse weather conditions



- On garbage, recycling, and compost collection days, place your garbage and bins, clearly labeled with your address, in their usual location. Containers that are inaccessible to garbage collectors will be moved by the contractor.



- Public transit service will be maintained, but stops, schedules, and routes may be modified. Information: STM-INFO (514-786-4636) or www.stm.info.



- Water outages are planned
- Les citoyens touchés recevront une affiche de porte 48 h avant la fermeture

Coordination with other nearby construction sites

The teams are ensuring that the work is coordinated with the various construction sites in the area, including the City of Westmount works located on Wood Street.

Where is the construction team?

Site personnel management is an integral part of project planning. During phases that require downtime (paint drying, concrete curing, asphalt cooling, etc.), or that are not performed on-site (part repairs, drinking water testing, etc.), personnel are temporarily assigned to another project.

Construction completion date: November 2025

If you are planning to move, undertake work on your land or any other situation where it would be relevant to inform the site manager, contact 514 872-3777.

Information

514 872-3777

Montréal.ca

info-travaux@montreal.ca



Obstructions and Construction Info

Explore the map to see construction sites underway near you.